



LPLI Staff Version

Lewis Pastoral Leadership Inventory™



LPLI, the Lewis Pastoral Leadership Inventory, is a confidential, online 360° leadership assessment inventory offered by the Lewis Center for Church Leadership of Wesley Theological Seminary.

LPLI provides those working in the church the opportunity to assess their effectiveness and gather feedback from others with whom they work. LPLI Staff Version is designed specifically for church leaders who do not provide the primary pastoral leadership of a church, but have significant responsibility for ministry leadership, including:

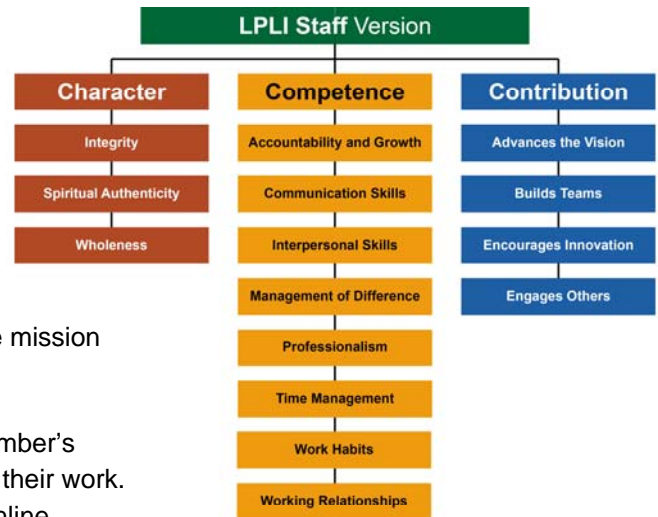
- Christian Educators • Program Directors • Music Directors • Youth Directors
- Children’s Ministry Directors • Church Administrators • Mission Coordinators

LPLI Staff Version is ecumenical and is appropriate for leaders serving in different denominations or in non-denominational settings. The instrument is flexible enough to be used by staff in other faith-based settings, such as denominational agencies, regional judicatories, mission organizations, or educational institutions.

What Does LPLI Pastor Version Cover?

LPLI covers 75 indicators of leadership effectiveness. The Lewis Center developed these measures based on a threefold definition of effectiveness in ministry that focuses on:

- **Character** — Who a leader is
- **Competency** — What a leader knows and does in the diverse areas of their leadership
- **Contribution** — What a leader accomplishes to advance the mission



How Does LPLI Work?

LPLI Staff Version is a 360° instrument that combines the staff member’s self-appraisal with the feedback of observers who are familiar with their work. The staff member and multiple observers are asked to complete online assessments, which should take no longer than 30 minutes to complete.

Individual observer responses are tallied with those of other observers. When the process is complete, the staff member receives a personalized leadership profile summarizing how they see their strengths or weaknesses and how they are seen by observers. This type of feedback is very important to leadership growth and development. The personalized leadership profile indicates the average response to each leadership indicator, but the staff member will not know how a particular observer responded.

LPLI Staff Version is available for \$59.

Learn more and enroll at lpli.org

LPLI



Lewis Center
for Church Leadership